

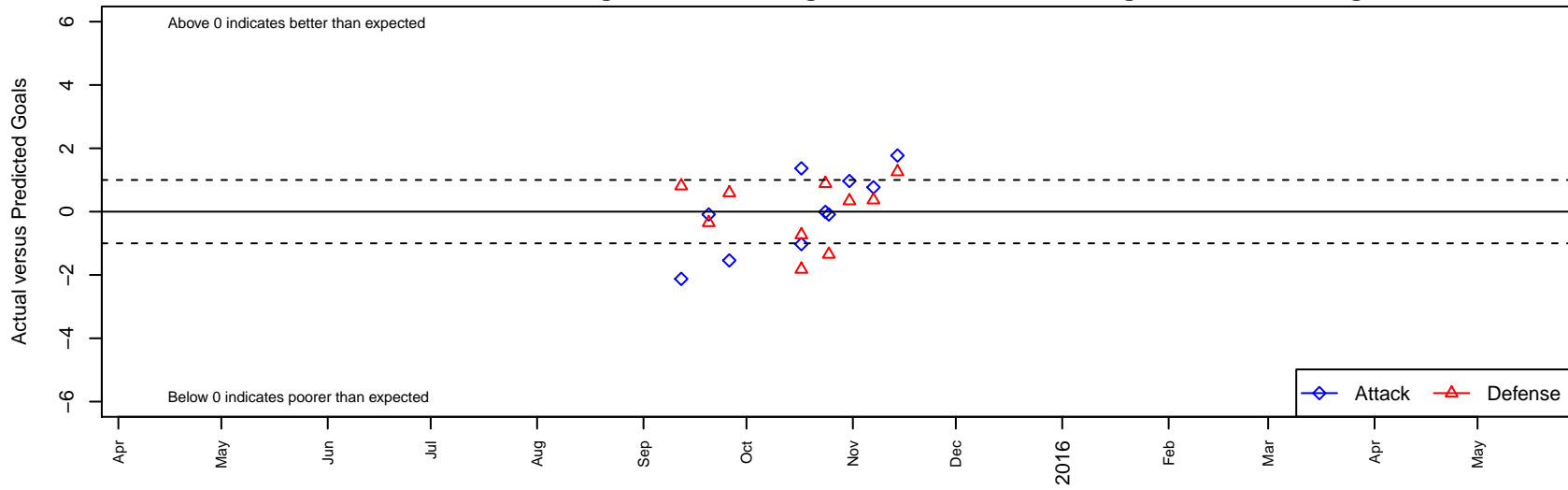
CB United Ephrata G02

Columbia Basin United FC
Ephrata, WA
G02 total strength=548
attack=0.44 defense=0.4
fall league = PSPL-Inland Div 2 U13

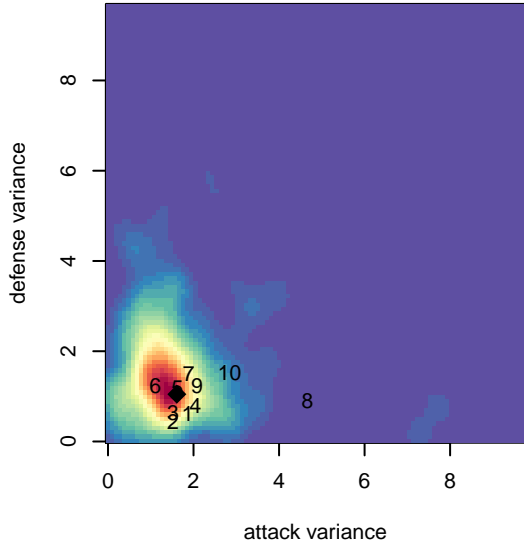
alt names used:
CB United GU13 Ephrata

Venues played:
2015 PSPL-Inland Div 2 U13

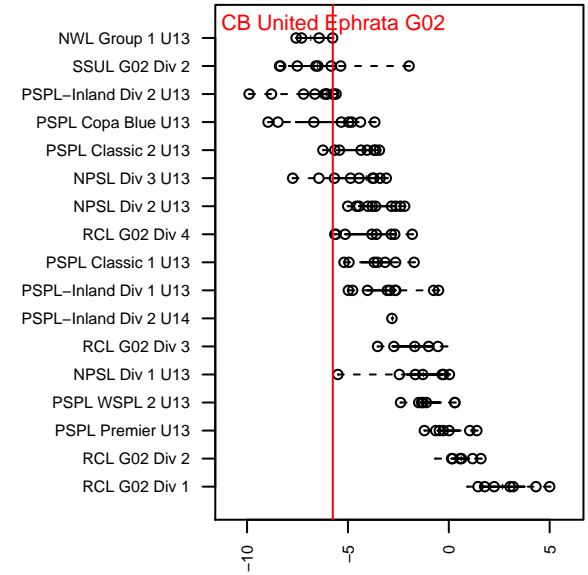
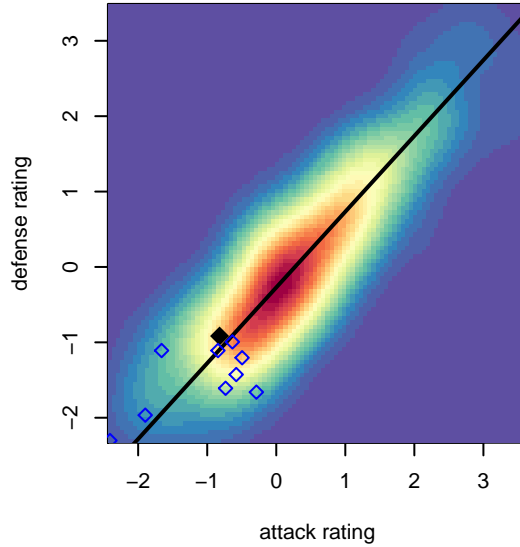
CB United Ephrata G02
Dots are actual minus expected GF (blue circles) and GA (red triangles).
Blue line is smoothed change in attack strength. Red is smoothed change in defense strength.



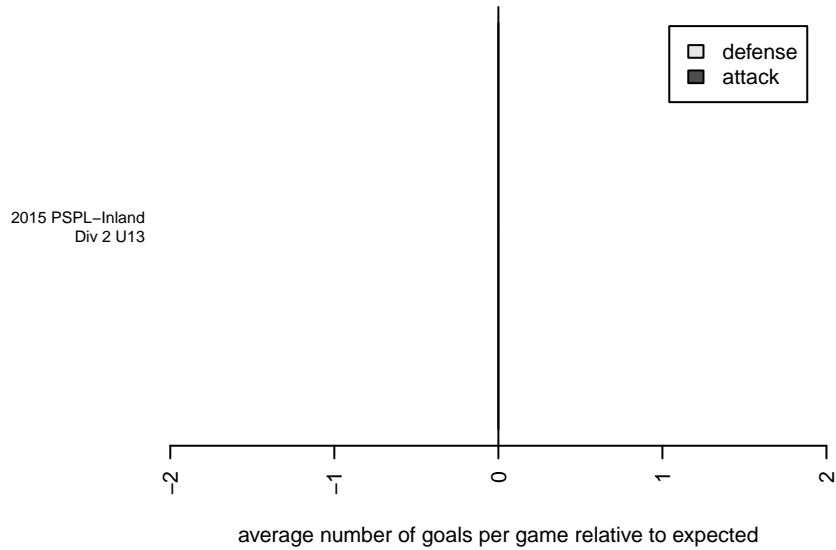
**attack and defense variance (black dot)
relative to other teams
and top 10 in region**



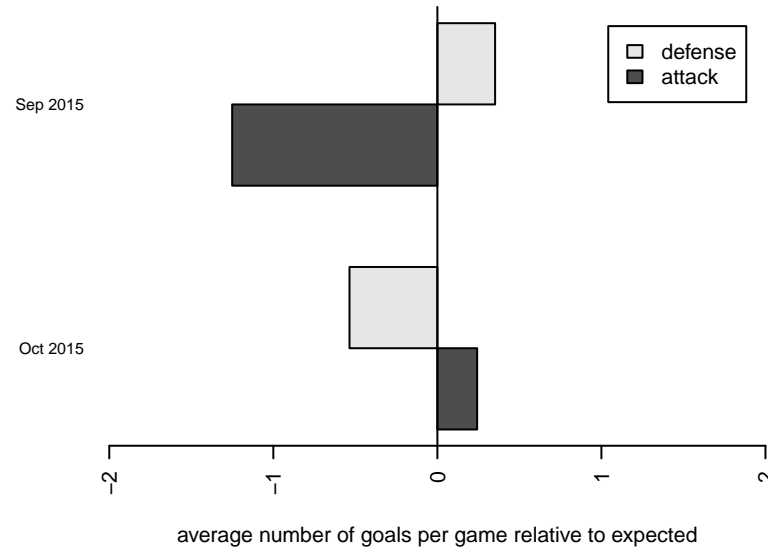
**attack and defense rating
relative to others at age
and all opponents in last 13 months**



Performance relative to 13 month average



Performance relative to 13 month average



date	home		away		venue	pred.home	pred.away
2015-11-14	ASE Royal G02	0	CB United Ephrata G02	3	2015 PSPL-Inland Div 2 U13	1.26	1.23
2015-11-07	CB United Ephrata G02	4	IEYSA Hollister G02	0	2015 PSPL-Inland Div 2 U13	3.23	0.37
2015-10-31	CB United Ephrata G02	5	Breakers Red G02	0	2015 PSPL-Inland Div 2 U13	4.03	0.34
2015-10-25	Wenatchee Valley United Strykers G02	3	CB United Ephrata G02	1	2015 PSPL-Inland Div 2 U13	1.65	1.09
2015-10-24	Wenatchee Valley United Magic Strykers G02	0	CB United Ephrata G02	2	2015 PSPL-Inland Div 2 U13	0.89	2.01
2015-10-17	CB United Ephrata G02	0	Valor Collins G02	3	2015 PSPL-Inland Div 2 U13	1.03	1.18
2015-10-17	CB United Ephrata G02	3	FC Spokane Grey 2 G02	2	2015 PSPL-Inland Div 2 U13	1.63	1.27
2015-09-26	Spokane Foxes Red G02	0	CB United Ephrata G02	0	2015 PSPL-Inland Div 2 U13	0.59	1.54
2015-09-20	CB United Ephrata G02	1	Wenatchee Valley United Strykers G02	2	2015 PSPL-Inland Div 2 U13	1.09	1.65
2015-09-12	Cobra Othello Sounders G02	1	CB United Ephrata G02	0	2015 PSPL-Inland Div 2 U13	1.81	2.12